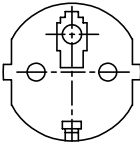
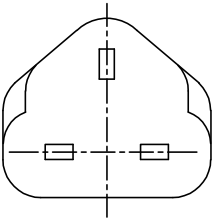
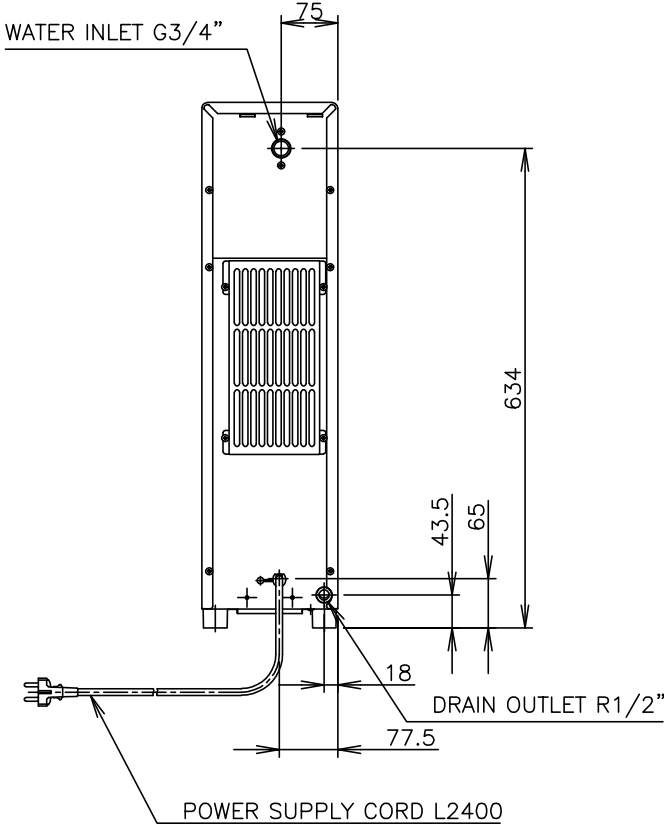
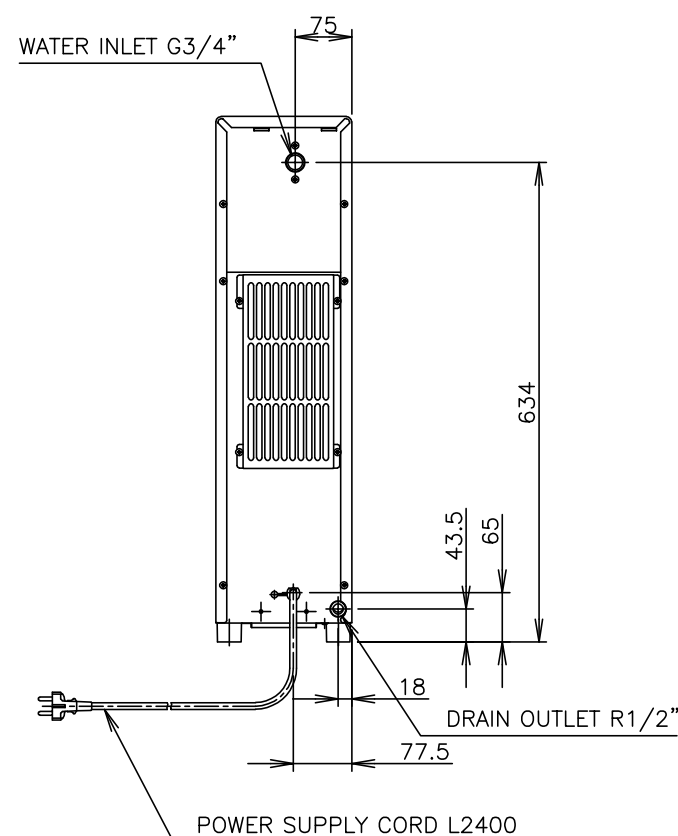




PACKAGE	Carton 244 mm(W) × 620 mm(D) × 748 mm(H)	ITEM	Hoshizaki Shuttle Ice Dispenser
ACCESSORIES	Installation Kit	MODEL	DSM-13DE
OPERATION CONDITIONS	Voltage Range: Rated Voltage ±6%, Ambient Temp: 5-40°C Water Supply Temp.: 5-35°C, Water Supply Press: 0.05-0.78MPa(0.5-7.8bar)	POWER SUPPLY	1 PHASE 220-240V 50Hz Capacity: 0.49kVA (2.0A)
<p>*We reserve the right to make changes in specifications and design without prior notice.</p> <div>   </div> <div> <p><u>SHAPE (EU CONTINENTAL)</u></p> <p><u>PLUG SHAPE (UK)</u></p> </div> <div>  </div>		AMPERAGE	Rated: 1.4A(AT. 32°C, WT. 21°C) Starting: 7.5kVA
		ELECTRICAL CONSUMPTION	160W(AT. 32°C, WT. 21°C) (Power factor: 48%)
		ICE PRODUCTION PER 24h	Approx. 13kg(AT. 10°C, WT. 10°C) Approx. 11kg(AT. 21°C, WT. 15°C) Approx. 9kg(AT. 32°C, WT. 21°C)
		WATER CONSUMPTION PER 24h	Approx. 0.108m ³ (AT. 10°C, WT. 10°C) Approx. 0.088m ³ (AT. 21°C, WT. 15°C) Approx. 0.081m ³ (AT. 32°C, WT. 21°C)
		SHAPE OF ICE	Shuttle
		FREEZE CYCLE TIME	Approx. 12min(AT. 21°C, WT. 15°C)
		ICE PRODUCTION PER CYCLE	Approx. 0.085kg / 27pcs.(AT. 21°C, WT. 15°C)
		STORAGE CAPACITY	Approx. 3kg
		ICE DISPENSING RATE	Approx. 700g / min
		DIMENSIONS	180 mm(W) × 527 mm(D) × 695 mm(H)
		EXTERIOR	Acrylic Baked Steel (Cabinet), ABS Molding (Front Panel)
		INSULATION	Polyurethane Foam
		INSULATION FOAM BLOWING AGENT	HFO-1233zd(E)
		CONNECTIONS -ELECTRIC	Y-Type Connection
		CONNECTIONS -WATER SUPPLY	Inlet G3/4 (Connected at rear side)
		CONNECTIONS-DRAIN	Outlet R1/2 (Connected at rear side)
		ICE MAKING SYSTEM	Mandrel type, Water agitated by plate
		HARVESTING SYSTEM	Hot Gas Defrost, Water Pan tilted by motor
		ICE DISPENSING SYSTEM	Auger Operated by Push Switch
		COMPRESSOR	Hermetic
		CONDENSER	Air-cooled, Fin and Tube type
		HEAT REJECTION	300W(258 kcal/h)(AT. 32°C, WT. 21°C)
		EVAPORATOR	Tin-plated copper tube on sheet with copper mandrel
		REFRIGERANT CONTROL	Capillary Tube
		REFRIGERANT CHARGE	R-600a/36g
		ICE MAKING CONTROL	Ice thickness measurement
		HARVESTING CONTROL	Thermistor on Evaporator Outlet
		ICE STORAGE CONTROL	Microswitch
		WATER SUPPLY CONTROL	Water Pan's movement
		ICE MAKING WATER CONTROL	Overflow
		ELECTRICAL PROTECTION	Class I Appliance, 5A Fuse
		P.C. BOARD CIRCUIT PROTECTION	High Voltage Cut-out(Internal)
		COMPRESSOR PROTECTION	Auto-reset Overload Protector(Internal)
		GEAR MOTOR PROTECTION	Auto-reset Thermal Protector
		WEIGHT	26kg (Gross 28kg)



APPROVED MIZUTANI	CHECKED HIRAKI	DESIGNED SUGITA	DRAWN UEDA	SCALE 1/10	TRIGONOMETRY	
*	*		*****	DATE 2025.04.09	DRAWING NO. D41945	SYMBOL 
APPROVED	DESIGNED	SYMBOL	DATE			