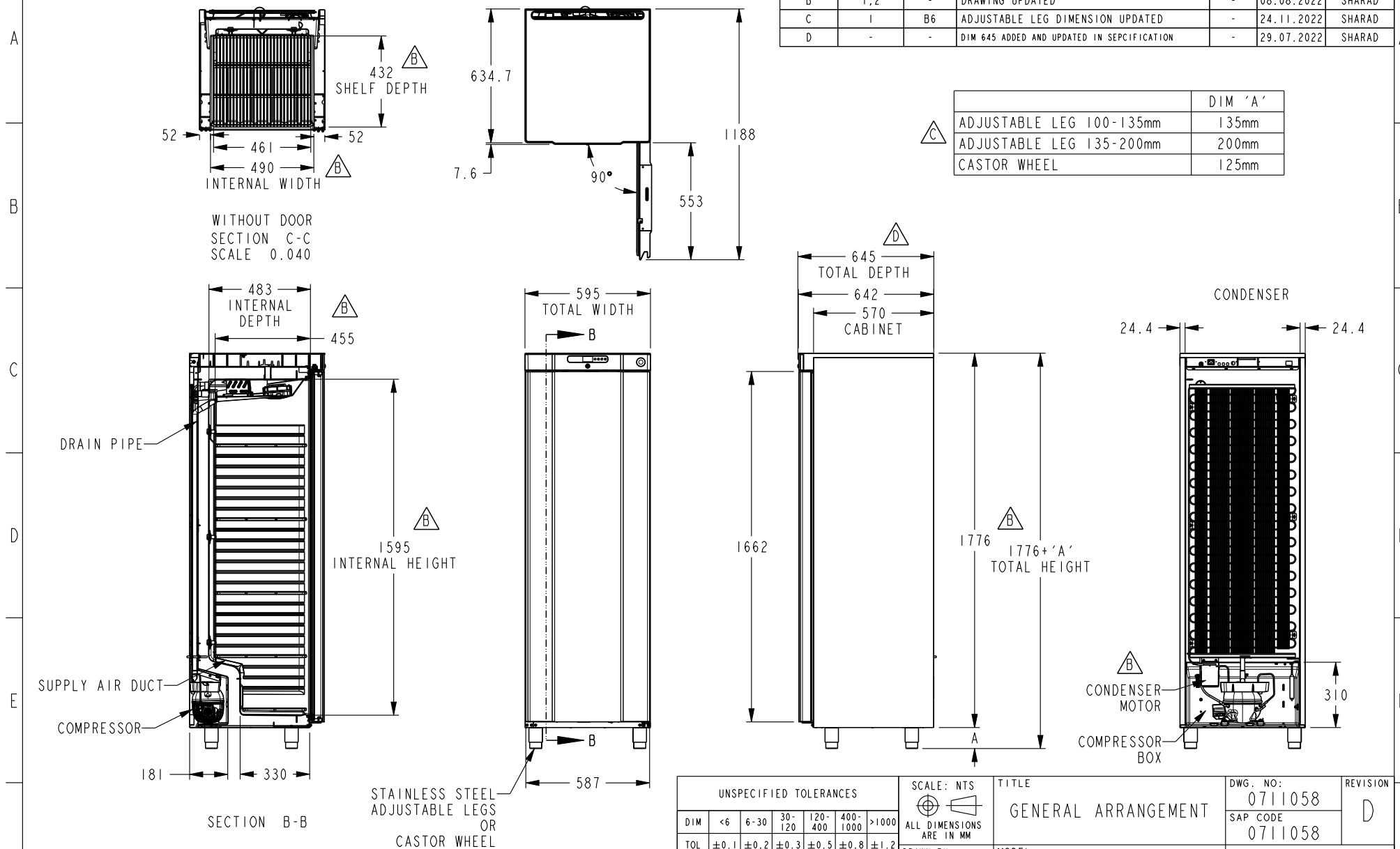


NOTE: COMPONENT AND ASSEMBLY MUST BE COMPLIANT TO APPLICABLE RECENT ROHS DIRECTIVES.

CHANGE NOTE						
REVISION	SHEET NO	ZONE	DETAILS	ECN	DATE	DRAWN
B	1,2	-	DRAWING UPDATED	-	08.08.2022	SHARAD
C	1	B6	ADJUSTABLE LEG DIMENSION UPDATED	-	24.11.2022	SHARAD
D	-	-	DIM 645 ADDED AND UPDATED IN SPECIFICATION	-	29.07.2022	SHARAD

	DIM 'A'
ADJUSTABLE LEG 100-135mm	135mm
ADJUSTABLE LEG 135-200mm	200mm
CASTOR WHEEL	125mm

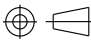
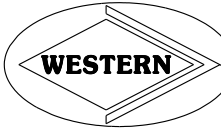


THIS ASSEMBLY DRAWING IS FOR ILLUSTRATION PURPOSE.  
COMPONENTS, ASSEMBLY SEQUENCE MAY VARY DEPENDING UPON MANUFACTURING PRACTICES SPECIFIC TO MANUFACTURING LOCATIONS.  
REFER PROCESS WORK INSTRUCTIONS FOR MORE DETAILS ON ASSEMBLY.  
REFER SAP BOM FOR EXACT MATERIAL CONSUMPTION.

UNSPECIFIED TOLERANCES						SCALE: NTS		TITLE		DWG. NO:		REVISION
DIM	<6	6-30	30-120	120-400	400-1000	>1000	ALL DIMENSIONS ARE IN MM	GENERAL ARRANGEMENT		0711058	SAP CODE	
TOL	±0.1	±0.2	±0.3	±0.5	±0.8	±1.2		MODEL		0711058		D
UNSPECIFIED TOL. ON ANGLE ±0.5							DRAWN BY	SAURABH S		K/F 420		
1 "O" DIMENSIONS ARE IMPORTANT. 2 REFERENCE DIMENSIONS ARE MARKED WITH " ( ) " 3 PART SHOULD BE FREE FROM SHARP EDGES & BURRS							CHECKED BY	BHASKAR		RELEASE DATE	SHEET	
REFERENCE STANDARD							APPROVED BY	PARESH		02.08.2021	1 OF 2	
									RELEASE STAGE:		IN WORK	

NOTE: COMPONENT AND ASSEMBLY MUST BE COMPLIANT TO APPLICABLE RECENT ROHS DIRECTIVES.

B	ITEM	UPRIGHT SOLID DOOR CHILLER	UPRIGHT SOLID DOOR FREEZER
	MODEL NAME	COMPACT K420	COMPACT F420
D	POWER SUPPLY	SINGLE PHASE, 220-240V AC, 50HZ	SINGLE PHASE, 220-240V AC, 50HZ
	POWER CORD	3M / AMPERAGE AS PER COUNTRY SPECIFICATION	3M / AMPERAGE AS PER COUNTRY SPECIFICATION
E	OUTSIDE DIMENSIONS (mm)	595(W)X645(D)X1776+A(H)	595(W)X645(D)X1776+A(H)
	INSIDE DIMENSIONS (mm)	490(W)X483(D)X1595(H)	490(W)X483(D)X1595(H)
F	EXTERIOR MATERIAL	PRE-COATED SHEET / STAINLESS STEEL SS430	PRE-COATED SHEET / STAINLESS STEEL SS430
	INTERIOR MATERIAL	HIPS	HIPS
A	INSULATION	POLYURETHANE FOAM (CFC FREE)	POLYURETHANE FOAM (CFC FREE)
	INSULATION FOAM BLOWING AGENT	CYCLOPENTANE	CYCLOPENTANE
B	REFRIGERATION SYSTEM	FORCED COOLING	FORCED COOLING
	COMPRESSOR	EMBRACO	EMBRACO
C	CONDENSER	WIRE ON TUBE TYPE	WIRE ON TUBE TYPE
	EVAPORATOR	COPPER TUBE	COPPER TUBE
D	REFRIGERANT	R600a	R600a
	OPERATING CONDITIONS	CLIMATIC CLASS4 : +30°C / 55% RH	CLIMATIC CLASS4 : +30°C / 55% RH
E	TEMPERATURE RANGE	+1°C TO +12°C	-25°C TO -5°C
	CASTOR / LEGS	4NOS OF ADJUSTABLE LEGS (100-130mm) OR 4NOS OF ADJUSTABLE LEGS (130-200mm) OR 4NOS OF CASTOR WHEELS (125mm)S	4NOS OF ADJUSTABLE LEGS (100-130mm) OR 4NOS OF ADJUSTABLE LEGS (130-200mm) OR 4NOS OF CASTOR WHEELS (125mm)
F	SHELF	4NO BIG SHELF + 1NO SMALL SHELF	4NO BIG SHELF + 1NO SMALL SHELF

SCALE: NTS  ALL DIMENSIONS ARE IN MM	TITLE  GENERAL ARRANGEMENT		DWG. NO: 0711058	REVISION  D
			SAP CODE 0711058	
DRAWN BY SAURABH S	MODEL  K/F 420			
CHECKED BY BHASKAR	RELEASE DATE 02.08.2021	SHEET 2 OF 2		
APPROVED BY PARESH	RELEASE STAGE:  IN WORK			